



PERSONAL REPORT | MON, JAN 20, 2014 - SUN, JAN 26, 2014



Personal Information

Program Usage

<p>Name: Blanca Jenne</p> <p>Gender: Female</p> <p>Age: 44</p> <p>Weight: 223.5 lbs</p> <p>Height: 5 feet, 4 inches</p> <p>BMI: 38.36</p>	<p>Hours Worn</p> <p><b>15 hours</b> per day</p>	<p>Meals Logged</p> <p><b>4.7 meals</b> per day</p>
		<p>Weight checked</p> <p><b>0</b> per week</p>



Performance Summary

Average values for selected time span

Time span: 7 days

MON, JAN 20, 2014 - SUN, JAN 26, 2014

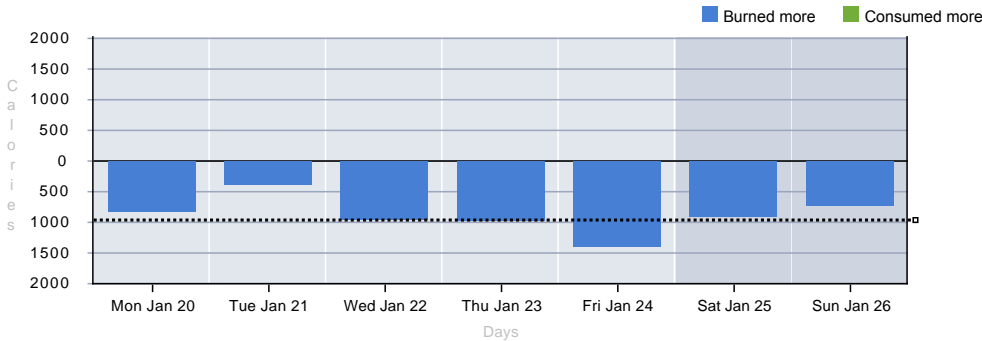
	TARGET	DAILY AVERAGE	TARGET
▶ CALORIES BURNED	2500 CALORIES	2595 CALORIES	
▶ CALORIES CONSUMED	1500 CALORIES	1664 CALORIES	
▶ CALORIE BALANCE	1000 DEFICIT CALORIE	931 DEFICIT CALORIE	
	TARGET	DAILY AVERAGE	TARGET
▶ PHYSICAL ACTIVITY	0:45 HRS:MINS	0:19 HRS:MINS	
▶ NUMBER OF STEPS	8000 STEPS	5749 STEPS	
▶ SLEEP DURATION	8:00 HRS:MINS	2:38 HRS:MINS	

Comments



### Calorie Balance By Day

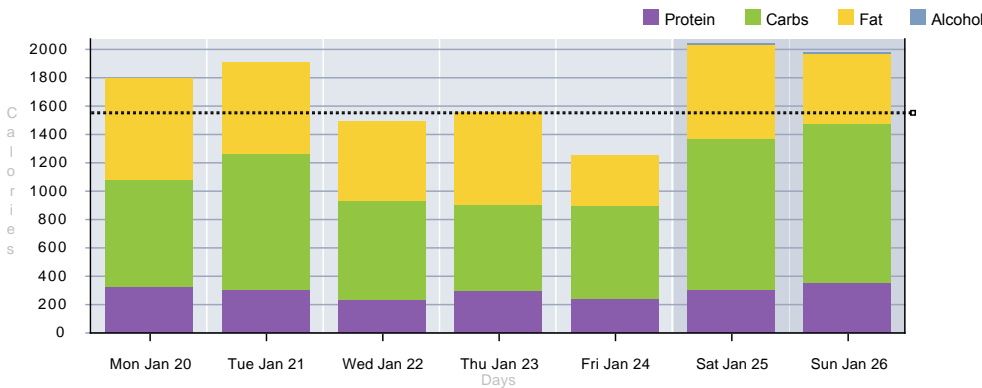
Daily Average: 931 calorie deficit  
Target: 1000 calorie deficit



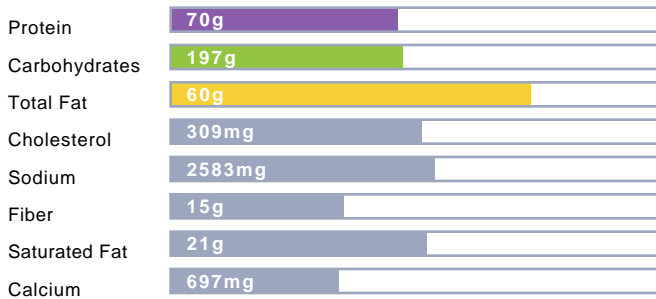
Comments

### Calorie Consumption By Day

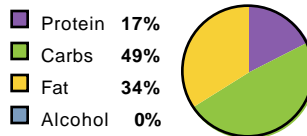
Daily Average: 1664 calories  
Target: 1500 calories



### Daily Average of Nutrients for Logged Meals

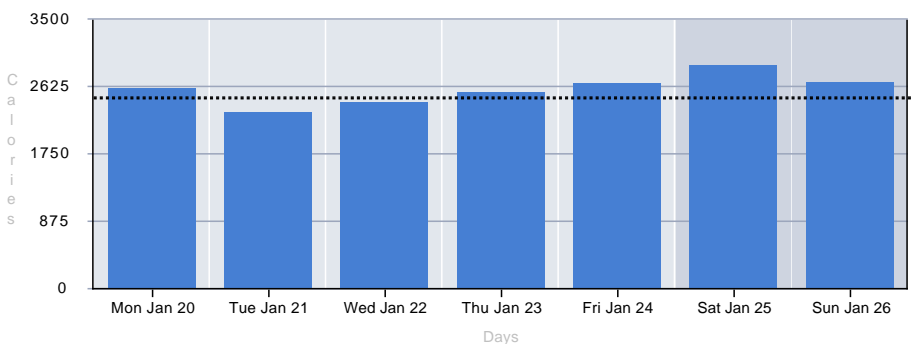


### Where your calories come from



### Calorie Expenditure By Day

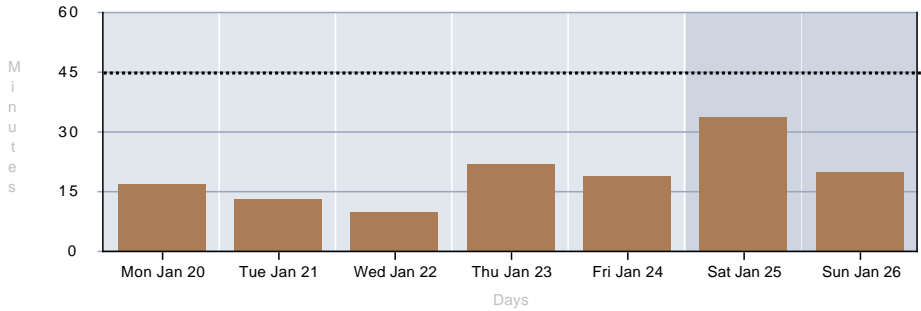
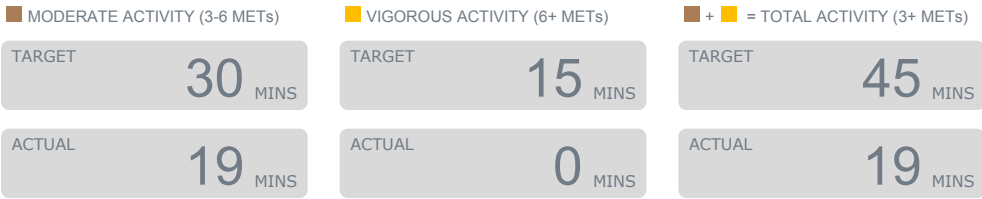
Daily Average: 2595 calories  
Target: 2500 calories





PERSONAL REPORT | MON, JAN 20, 2014 - SUN, JAN 26, 2014

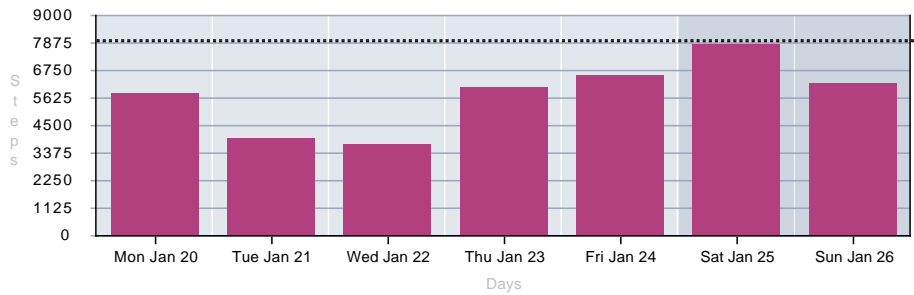
Physical Activity By Day



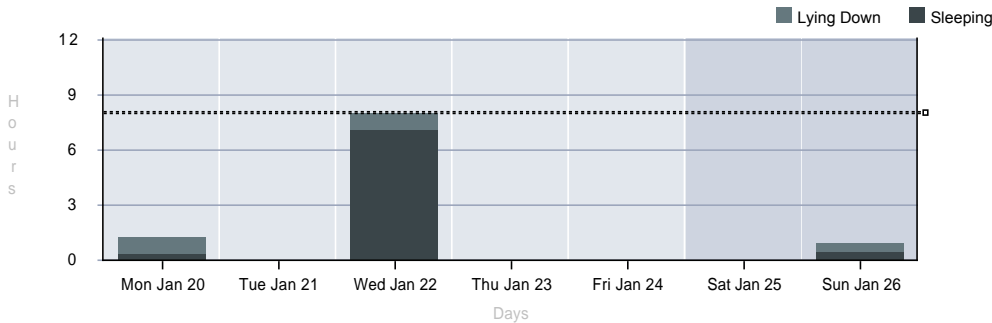
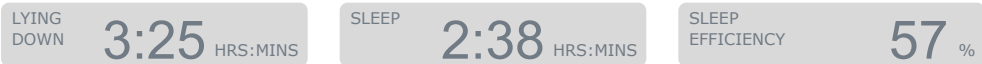
Comments

Number of Steps By Day

Daily Average: 5749 steps  
Target: 8000 steps

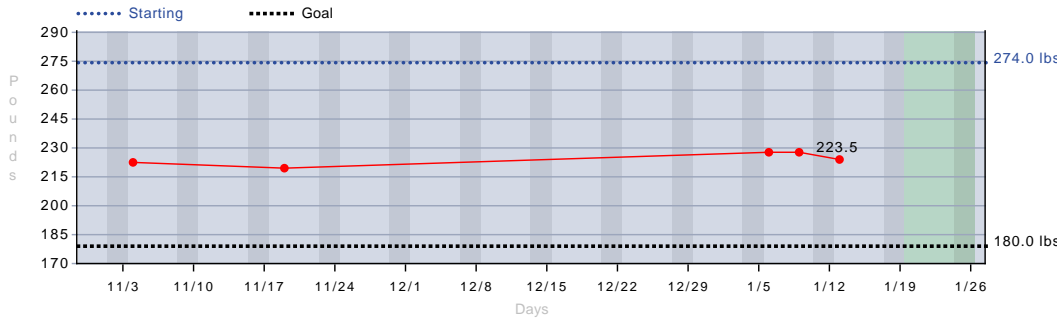


Sleep Duration By Day

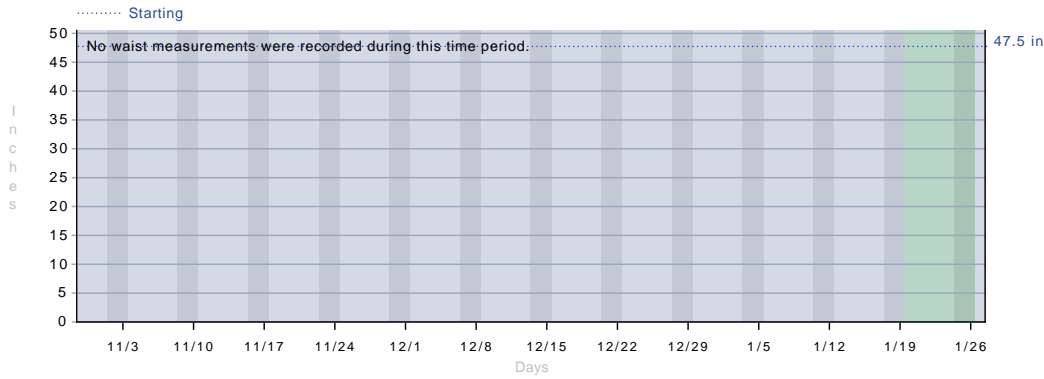




### Weight



### Waist Circumference



Comments